



Finnish Center Association

FCA News

April 2018

FOR MEMBERS OF THE FINNISH CENTER ASSOCIATION

CALENDAR OF EVENTS

APRIL

- 01 Rental
- 04 Wednesday Asahi Exercise Program 11 am
- 06 Friday Night Buffet 5 - 8 pm
- 06 Friday Pasty Prep 10 am – 4 pm
- 07 Saturday Pasty Bake & Sale 8:30 am – 12 pm
- 08 Sunday Finnish Film "Co-operatively Yours" 2 pm
- 11 Wednesday Asahi Exercise Program 11 am
- 11 Rental
- 11 FCA Joint Board Meeting 6:30 pm
- 13-14 Rental
- 15 Sunday Folk Dancing Class 2 pm
- 15 Rental
- 18 Wednesday Asahi Exercise Program 11 am
- 19 Thursday Flea Market set up 12 - 4pm
- 19 Rental
- 20 Friday Flea Market 10 am – 4 pm
- 20 Friday Night Buffet 5 - 8 pm
- 21 Saturday Flea Market 10 am – 3 pm
- 25 Wednesday Asahi Exercise Program 11 am
- 25 Wednesday Monthly Luncheon 12 noon
- 27 Friday Spring Market set up 12 – 4 pm
- 28 Saturday Spring Market & Craft Show 10 am – 4 pm
- 28 Rental
- 29 Sunday Open House 1 – 4 pm

MAY

- 01 Rental
- 02 Wednesday Asahi Exercise Program 11 am
- 05 Saturday Vappu Party 5 pm - midnight
- 06 Sunday Finnish American Singers of MI Concert 4 pm
- 09 Wednesday Asahi Exercise Program 11 am
- 09 Wednesday FCA Board Meeting 6:30 pm
- 12 Rental
- 16-19 Rental
- 20 Sunday Scholarship Reception 2 pm
- 21 Monday Spring Luncheon 12 noon
- 23 Rental
- 25 Friday Closed for Memorial Day weekend
- 28 Monday Closed for Memorial Day weekend

Weekly Events

- Finnish American Singers
Monday 7 pm
- Library
Open Monday 10 am-2 pm
- Nikkarin Talo
Mondays 9 am
- Finlandia Garden Club
Mondays 9 am

Monthly Events

- Finnish Conversation
1st Friday of the month 10 am
- Book Club
Last Monday of the month 1 pm
- Luncheon
Last Wednesday of the month
12 noon
- Open House
Last Sunday of the month 1-4 pm

**Reservations are recommended
for all events.**



CHAIRMAN'S CORNER

I am writing this in Finland during our yearly ski trip. Winter is still here with a lot of snow, especially here above the Arctic Circle. Days are getting longer with a lot of sunshine and northern Lapland is providing a perfect surrounding for skiing in the fells and woods while experiencing the real sound of silence.

Finland today is a happy place and as a country is doing remarkably well. Last week, Finland was selected as the happiest country in the world. Finland has also according to the CIA the lowest Gini Index in the world - this means that income distribution is the most even among all of the countries of the world.

Spring is in the air! Finnish Center is buzzing with activity. St. Urho's celebration was a wonderful get-together in harmony with all other events going on at the same time. Monthly Finnish movies and Suomi Koulu are going strong.

Our wonderful volunteers are working hard with all events to have programs for all to enjoy.

The donation drive has been going on during the last three months and we are making the next big investment in the kitchen. We are replacing our old and failing dishwasher! It is long overdue and will make the operation in the kitchen much easier.

Tapiola Senior Housing renovation plans are progressing. There is a lot of work to be done but this is something we must do to provide updated and modern facilities for our renters.

Mark your calendars for all of the events in April. There will be a movie, Flea Market, monthly luncheon, and Spring Market among others as noted in this newsletter.

See you at the Finnish Center during our events. And as always, if you have any questions do not hesitate to contact us.

Mia Lamminen
Chairman



35200 W. Eight Mile Road
Farmington Hills, MI
48335-5208
Tel: (248) 478-6939
Fax: (248) 478-5671
finnishcenter@gmail.com
www.finnishcenter.org

Officers

Mia Lamminen, Chairman
Roger Wanttaja, Vice Chairman
Robert Waissi, Secretary
Marlene Ruuskanen, Treasurer

Board of Trustees

1 Year

Cynthia Haffey, Roger Wanttaja,
Robert Waissi

2 Year

Mia Lamminen, James Lee,
Mary O'Brien

3 Year

Irene Lamanen, Linda Poirier,
Ilona Takakura

Alternates

#1 Paul Rajala
#2 Carol Tudball
#3 Mike Fadie

Financial Review

Nancy Lee
Maria Lena Kuhn
Gene Belttari

Committee Chairpersons

Building & Grounds

Roger Wanttaja

Cultural

Yvonne Lockwood

Education

Katri Ervamaa

Finance

Olli Lamminen

Gift Shop

Mary O'Brien

Mailing

Alice Manley

Membership

Fran Fadie

Publicity & Publications

Fran Fadie

Social

Mary O'Brien

SENIOR CITIZEN HOUSING CORPORATION

Cynthia Haffey, Chairman

Tapiola Village

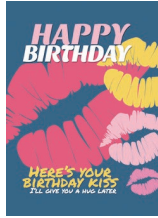
Laura Fultz, Manager
(248) 471-3802
tapiola@ameritech.net

Freedom Square

Theresa Show, Manager
(248) 442-7250
freedom.square@yahoo.com

HAPPINESS FUND

Did you know you can also request a happiness greeting? New baby, special anniversary, significant achievement and more.



GIFT SHOP

Spring is trying to come to The Gift Shop. We have received some exciting new books. For the cooks we have one called *Scandinavian Desserts* and for the kids, *Midsummer Tomte* and the *Little Rabbits*. We have also received 2 books by Fredrick Blackman. *A Man called Ove.* and *Bear Town*. Be sure to stop in and pick up a new book. While you are here you might like some Finnish candy. We have many things for your enjoyment, so please stop in.



FRIDAY NIGHT DINNER

April 6 & 20
5-8 pm

FinnFolk plays during dinner!



VAPPU PARTY

CELEBRATION OF SPRING

SATURDAY, MAY 5, 2018
5 PM UNTIL MIDNIGHT

at
FINNISH CULTURAL CENTER
35200 West Eight Mile Road
Farmington Hills, MI



FUN PROGRAMS FOR ADULTS AND CHILDREN

ADMISSION \$15.00

STUDENTS and SENIORS \$5.00

CHILDREN FREE

POTLUCK

A-M: BRING AN APPETIZER OR SALAD

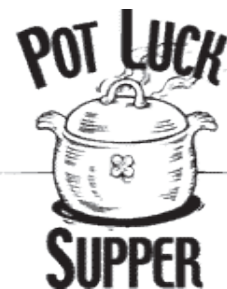
N-Z: BRING DESERT

MAIN COURSE PROVIDED

CASH BAR

Bring the whole family

Bring a friend



If you are not a member of FCA yet, now is a good time to join, applications available at the Center.



FROM THE LIBRARY



Does anyone remember the *Upper Peninsula Lure Book*, published in the 1930's, '40's, and possibly '50's? It has long since disappeared, but we now have a replacement, *100 Things to Do in the Upper Peninsula Before You Die*, published in 2017 by Kath Usitalo. It has been mentioned in this column before, but deserves more attention than it got at that time. Usitalo, who probably knows more about the UP than anyone else, has researched the peninsula from one end to the other and gathered information about the eats available, entertainment, sports and recreation, culture and history, and shopping and arranged them in a handbook handy to carry around as you follow in her footsteps.

Besides the ordinary things like pasties, Trenary toast and the huge sweet rolls at the Hilltop in L'anse, Usitalo found out-of-the way eating places like Les Cheneaux Culinary School Restaurant in Hessel. Where in the world is Hessel? I lived in the UP for over 30 years and never heard of it! Here, a class of students preparing to be chefs provide a fine-dining experience. It's open only during the summer. Or if you want an extraordinary sandwich on a choice of homemade breads, stop at the Upper Crust Deli in Manistique. Save room for a cookie fresh from the oven. Marquette has a large number of excellent eating establishments. Eight of them are listed. If you're not familiar with the Jam Pot in Eagle River, do visit the monks and pick up some thimbleberry jam.

Did you know there is a 240-acre bear sanctuary in the U.P.? It was established in 1997 to rescue orphaned bear cubs and also serves as a rehab facility for injured bears. It usually houses about 30 or 40 bears. It sounds better than a zoo! If art is your thing, or even if it isn't, the Junkyard Art and Park at Lakenenland sounds interesting. Here you will find products of Tom Lakenen's imagination using metal "junk". It's free, but donations are appreciated. If you remember Anatomy of a Murder, you might like to visit the courthouse where the trial took place, and even visit Big Bay, where the crime happened. You don't get to see Moose on the loose very often, but you might in the UP, where around 533 moose are said to exist. They are out and about especially at dawn and dusk, when they are foraging for food and water. Quite a few have been seen in Van Riper Park, west of Marquette. Bear in mind that moose are not friendly and can be very dangerous. If photographing, bring a long-lens camera.

There are plenty of sports and recreation activities to keep you busy. The Porcupine Mountains provide hiking in summer as well as skiing in winter. If you like to rough it, bring your camping gear for campgrounds abound. Lake Superior has miles and miles of beaches for your enjoyment. Attend hockey games in season in Houghton, the "Birthplace of Organized Professional Hockey". Explore museums, the Museum of Ojibwa Culture, the Great Lakes Shipwreck Museum, among others. Dog sledders and enthusiasts can see or partake in dog sledding in season. If you're into snowmobiling, you'll find 3,300 miles of designated snow mobile trails. If none of the foregoing interests you, go up there for the fall color season. You won't be disappointed.

The UP is full of culture and history, from ghost towns to memorabilia from when copper was king. Go for an underground mine tour, a trip through the Soo Locks, or see an old fort at the tip of the Keweenaw Peninsula. See how the old timers lived at Hanka Homestead. You can sleep in a lighthouse, if that interests you. Much of the Copper Country is now the Keweenaw National Historical Park with a Visitor Center in Calumet.

If your thing is shopping, don't despair. There's no Fifth Avenue up there, but you'll find plenty of unique items like Stormy Cromer head gear, agates both in the raw as well as mounted in jewelry, copper in its natural form or fashioned into decorative objects, as well as hand crafted items of all kinds. If Scandinavian items interest you, head to Norway in the western UP to the Swedish Passport Company/Scandia House

(continued on page 5)

APRIL IN THE GARDENS

April is the time of spring and renewal in the gardens. Spring bulbs are up, many of the birds have returned, and the gardeners are back finishing up chores we didn't get to in the fall. The wet days in early March kept us from trimming back the perennials and grasses during the warmer days forcing us to wait until April for those chores. In spring we also cut back the spirea, hydrangea and clematis among others.

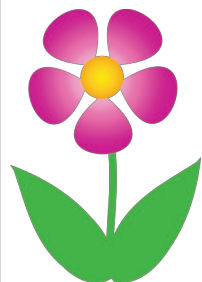
The red winged black birds are back in full force. The males protect several females and stake out an area. We typically have a couple of sets of nesting sites with one near the bridge and one back in the wetlands. Birds tend to return each year to sites to which they are comfortable, we just have to accommodate them and sometimes put up with the male chattering at us if we are too close in the wedding garden.

We have another Eagle Scout interested in working on a project at the Finnish Center this year. Watch for further information if he decides to proceed with a project!

Unfortunately I will be out of town taking care of family issues typically a week or more a month this year so we are very short handed in the gardens. As we get closer to summer and vacation times for other gardeners, I may be putting out a request for watering assistance for pots and the vegetable garden (vegetable plots are available in May, more information next month).

If you see cars near the woodshop on Monday morning, please drop by and join us in our projects, to chat, or have a cup of coffee.

If you have any questions or comments, or items to donate, please contact me at (734) 546-5190 or gaylegullen@hotmail.com



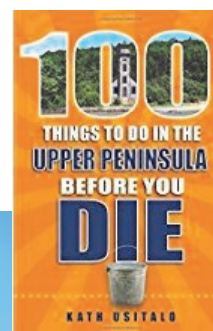
Gayle Gullen
Finlandia Garden Club President

Library (continued from page 4)

International where you will find a dizzying array of Swedish Dala horses, collectible Danish Christmas plates, intricately patterned Icelandic sweaters, Iittala glass from Finland and much, much more. If you're looking for snowshoes, you'll find them in the UP also.

If I were younger and in better health, I'd spend a month in the UP with Usitalo's book in hand, checking out all of her finds. My mother, who had a proverb for every occasion, spoke of people who go "beyond the sea for fish". With the UP practically on our doorstep, we need not go "beyond the sea" or to faraway places to seek a paradise. Our state motto says it all: "If you seek a pleasant peninsula, look about you."

Lillian Lehto
lklehto@comcast.net



MEMORIALS

In memory of FCA life member **Ruth Kaarela** (1/8/18) a donation has been made by Donald Maninen.

The FCA would also like to extend condolences to the family and friends of:

FCA life member **Ray Wanttaja** (3/23/18).

Please make your check out to the Finnish Center Association and send donations to: FCA, 35200 West Eight Mile Road, Farmington Hills, MI 48335. Donations received by the 5th of each month will be published in the next month's newsletter.

When making a memorial donation, you may direct it toward a specific fund. The funds available are: FCA General Fund, Library, Scholarship, Hoijakat Folk Dancers, Drama Club, Finn Weavers, Garden Club, FinnFolk Musicians and Finnish American Singers.

The family of the deceased may direct undesignated donations toward a specific fund (up to one year after date of death).

You may also direct your donation toward the Elders' Housing, but then your check must be made out to FCA Senior Housing Corp.

Please include full name (with middle initial), address, dates of death and birth of the deceased; also the name and address of the next of kin to whom the acknowledgement card is to be mailed.

If you know of a member, parent or child of a member who has passed away, please call the FCA at (248) 478-6939.



GET WELL, THINKING OF YOU

Sending get-well cards, thinking-of-you cards and words-of-encouragement cards to FCA members.

Please notify me if you think someone might need warm and thoughtful wishes from the friends at the FCA. Send or call your card requests to the attention of the "Sunshine Lady" at the FCA.

Thank you,
Eunice Potti Gould



SOCIAL NEWS

The Spring Market is scheduled for April 28. There will be crafters with a variety of items to sell. Please join us for an enjoyable day. Lunch will also be served.

Vappu party will be May 5th for all to enjoy.

June 13 there will be a Strawberry Social with fresh strawberry shortcake. Serving begins at 2 pm. Donations will be accepted. What a great start to summer!

Mary O'Brien

ASAHI HEALTH EXERCISES

April 4, 11, 18, 25
May 2 & 9
11am - Free



An exercise program developed in Finland by a Finnish medical doctor along with other professionals.
It is well suited for all ages.
Everyone is welcome!



FOLK DANCING
Sunday, April 15
2 pm

FINNISH FILM

April 8, 2018
2:00 pm

Co-operatively Yours

Director: Kristin Lee Ojaniemi

2017

English

The co-op movement in Finnish American cannot be understated. Dr. Arnold Alanen, argues that “one of the most legible stamps of Finnish American influence has been the development of consumers’ cooperatives.” To many Finns. The co-op became a way of life and an integral part of the Finnish American experience.

For a century, Settlers Co-op in Bruce Crossing has been the hub of that Finnish American community. This film captures the history and collective memories of the residents of the Settlers Co-op from its humble beginnings in 1917 to the present day and celebrates the legacy of the Finnish American cooperative movement in America.



FLEA MARKET & BAKE SALE

April 20, 10 am - 4 pm
April 21, 10 am - 3 pm



There will be lots of treasures for you to choose from at the Spring Flea Market and Bake Sale. Come and browse glassware, antiques, toys, jewelry, and more. Be sure to stop and purchase some baked goods or a FCA made pastry before you leave.

Not interested in slightly used items? Swing by the Gift Shop for beautiful Iittala, Finnish candy or a good book. We have it all!

Contact Denise Book or Margaret Laurila for more information.

BAKING NEWS



FCA bakers met on March 12th making eight batches of pulla/nisu.

This baking process takes five hours, beginning at 9:30 a.m., but the results of about 52 loaves of tasty pulla/nisu are well worth it.

March bakers were Dee Aebersold, Elsie Felix, Ilene Yanke, Fred Page, Betty Taipalus, Barb Whitty, and Lorraine Hannah. Men and women are welcome to come bake, chat with friends and get a little taste of the product.

Thanks goes to David Sharpe who unlocks the center for us on baking days.

Kiitos, Ilene Yanke

SPRING MARKET

Saturday, April 28
10 am - 4 pm

We have gathered a select group of crafters for your shopping pleasure. We are sure you will find a gift for someone special or for yourself.

See you there!



PORGY AND BESS

“Summertime, and the livin’ is easy!” Ah, how many of us look forward to the warmer days of summer, enticed by a slower pace, relaxed light-filled evenings, and pastimes that beckon us to laugh and enjoy life. However, that song from *Porgy & Bess*, an American opera by George Gershwin (his brother Ira, with Dubose and Dorothy Heyward), was a plaintive assurance by a young black American woman to her baby that, although one day he would be on his own, now he was safe with his parents. “One of these mornings you’re going to rise up singing then you’ll spread your wings....But till that morning there’s a’nothing can harm you with daddy and mamma standing by.” It was a reassuring moment in a musical offering fraught with tension, violence, distrust, unfairness, and only a small amount of hope. Written in 1935, two years before Gershwin’s death at the age of 38, the work called the “first great American opera” was set in a black American community and performed by black artists, during a time when black culture was considered exotic by the white majority. Debate has centered around the fact that white artists created an opera about Southern black life, themes, and music!

Hearing that song and many, many others in *Porgy & Bess*, sung in Hill Auditorium at the University of Michigan in Ann Arbor on February 17th was only one aspect of an amazing evening at the opera! A trip was planned and coordinated by the Finnish Singers and ultimately included many of the singers with spouses and friends who left from the Finnish Center on a chartered bus to eventually settle into wonderful mezzanine seats in the auditorium. This writer had never been to an opera and didn’t know exactly what to expect. Enjoying an overhead view, this writer counted eighty-eight chorus members seated in two rows on risers at the back of the stage, with a slightly elevated open platform area between the chorus and the orchestra seated at the front of the stage. After many years playing in bands while in school, it was impressive to view the size and make-up of the group; a full percussion section balanced out the strings, woodwinds, brass, and two pianos. The upright, honky-tonk piano led off the opera, played by a woman that definitely “tickled the ivories.” Our director shared two interesting facts about the pianos after the performance, noting the upright piano was out of tune and said that was deliberate, to lend itself more to the flavor of the music and the atmosphere of the opera. He also shared that the grand piano that was played during the whole performance had been Gershwin’s, donated to the university as part of the Gershwin Initiative. “Established in 2013, the Gershwin Initiative is a historic partnership between the University of Michigan and the Gershwin family estates, who have granted our scholars unprecedented access to all of the Gershwins’ personal papers, compositional drafts, and original manuscript scores, in order to create the first-ever critical edition of their works.” The original score was prepared from the composer’s sketches not his orchestrated manuscript, so there were wrong notes and disconnects between the voices and instruments. The need for a new score of *Porgy & Bess* was the catalyst for the Initiative. There will ultimately be two scores created: a highly edited and notated copy for research and discussion and a full 700+ page clean score and part all with the same number of measures for the first time! This performance was the first time the new score was used in performance.

Major parts in the opera were sung by renowned professional singers in the non-staged performance. That means there were no sets, costumes, or props. Singers’ characters sometimes were reflected by the type of clothing they wore. The “bad guy” stereotypically wore a darker suite with a red flower in his lapel. Bess, viewed as a loose woman, wore a vibrant red dress. Porgy, a poor, disabled man wore plain pants and a white dress shirt. All, however, staggered listeners with powerful, gorgeous voices. Acoustics are superb in the auditorium, so listening to the primary singers backed by the chorus and the orchestra was a feast for the senses!

Submitted by scribe, Katy Koskela



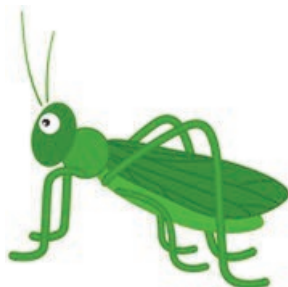
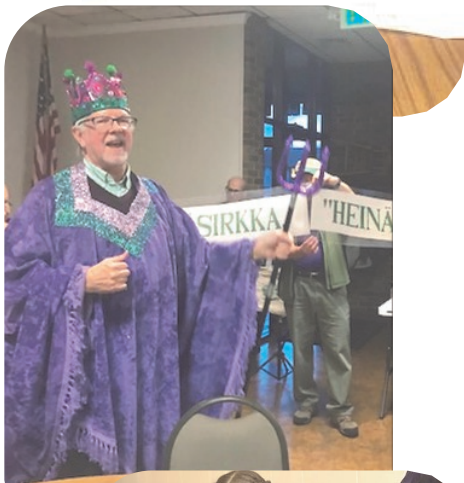
ST. URHO CELEBRATION

Hearty thanks to the five Finn Folk musicians, Louise Hartung, Kris Kreiner, Steven Niemi, Roger Hewlett, and Don Reinholm who provided their excellent music. Don brought one of his students to play an accordion solo. These musicians made the evening a real party!

Frank Gottberg, Mark Riikonen, and I gave the readings. Frank brought viilli for guests to taste. I sang a song about St. Urho chasing the grasshoppers out of Finland accompanied by Roger Hewlett. We played several fun games and some coaxing, we got 3 of the children to hop like a grasshopper. Near the end of the party, they even worked on the provided coloring pages.

Louise Hartung and Kris Kreiner led the grapevine step throughout the room followed by many others. Steve Niemi's name was drawn from the hat to become the St. Urho for 2018. Many of us paraded behind him in his robe, crown, and pitchfork. We ended with the toast to banish the grasshoppers and by singing amusing songs about St. Urho.

Ilene Yanke





FINLAND TODAY



First, Nokia to help build the first 4G network on the moon. Nokia has announced that it has been selected as the technology partner for a project to develop a space grade 4G network to build on the moon. Nokia, the network equipment manufacturer, will lend its expertise to Vodafone Germany, which is planning on setting up the network to support the first-ever privately funded Moon landing to be carried out in 2019 by Audi and PTScientists, a group of volunteer scientists and engineers based in Berlin, Germany. Nokia states in a press release that the network will enable the live-streaming of high-definition video from the Moon to audiences on Earth. The network will also allow scientists to remotely control two lunar Quattro vehicles, and enable the vehicles to communicate and transfer data with each other. Robert Bohne, the founder and Chief Executive of PTScientists, says; "This is a crucial first step for sustainable exploration of the solar system. In order for humanity to leave the cradle of Earth, we need to develop infrastructures beyond our home planet. The great thing about this LTE solution is that it saves so much power, and the less energy we use sending data, the more we have left to do it in science." Marcus Weldon, the chief technology officer at Nokia says, "This important mission is supporting, among other things, the development of new space-grade technologies for future data networking, processing and storage, and will help advance the communications infrastructure required for academics, industry and educational institutions in conducting lunar research. These aims have potentially wide-ranging implications for many stakeholders and humanity as a whole."

Finns are increasingly confident about the national economy, the employment situation, and their own financial situation and employment prospects. Statistics Finland reported that its Consumer Confidence Indicator (CCI) climbed to its highest ever reading of 25.8 points in February, an increase of 5.0 points above the corresponding period in 2017. Perttu Kangassalo, an expert at Statistics Finland says, that this is the first time that the CCI has produced such a high reading since its inception in 1987, and it is way above the long term average of 12.3 points. Statistics Finland's CCI consists of four components: the consumer's expectations about the national economy, the employment situation, their own financial situation, and their own savings possibilities.

The Finnish documentary film, *Life In Four Elements*, has been named the "best film about mountains, sport, and adventure" at the 12th Festival Gorniskega Filma Slovenia. "*Life in Four Elements*" documents the human experience with primordial elements: earth, air, fire and water. The film also won the Silver Gentian award for the best "artistic-technical" contribution at the Trento Film Festival in Italy.

The Canadian policy think-tank, Fraser Institute, has named Finland as the most attractive jurisdiction in the world for mining investment. The Annual Survey of Mining Companies, ranked 91 jurisdictions around the world based on their geologic attractiveness for minerals and metals and the extent to which government policies encourage or deter exploration and investment. Finland moved up from 5th place in 2016 to take the top spot in the 2017 Investment Attractiveness Index. The ranking combines the results of the Best Practices Mineral Potential Index, which rates regions based on their geologic attractiveness, and those of the Policy Perception Index, a composite index that measures the effects of government policy on attitudes toward exploration investment.

(continued on page 11)

Finland Today (continued from page 10)

And finally, a young Matti was always getting into trouble all over the neighborhood. One day his father, Heikki, comes home with a brand new bike for Matti.

"Well, Heikki," says his wife Hilma, "Why did you do that? Matti is such a terror all the time! Do you think that a new bike will improve his behavior?"

"No,"said Heikki, "But I figured that maybe it will spread it out over a wider area."

Thank you Jim Fostey

Markku Ketola
marketola@yahoo.com



Happy 89th Birthday!

Donald Manninen celebrated his 89th birthday during the buffet and St. Urho Celebration at the Finnish Center.



ADVERTISING RATES

| | |
|-----------------------------|---|
| DEADLINE: | DEADLINE FOR MAY ISSUE IS APRIL 5TH |
| EDITOR CONTACT INFO: | PAUL RAJALA |
| LAYOUT AND DESIGN: | NANCY RAJALA |
| E-MAIL: | nrajala@comcast.net |

FCA NEWS ADVERTISING RATES & SPECIFICATIONS

FCA News is published 11 times annually (June-July issue is combined) by and for members of Finnish Center Association. Circulation is about 500 of your fellow FCA members, and others, per issue, and unknown numbers online.

Deadline/payment for ad is the 5th of the month preceding publication.

Column (ad) width is 2-1/4" for rates quoted below. Other sizes quoted on request.

Rates for a camera-ready, black & white ad, per three month period:

3 month rate 1" ad - \$30.00. 1.5" ad - \$45.00 2" ad - \$60.00

Pay for full year 1" ad - \$100.00. 1.5" ad - \$150.00 2" ad - \$200.00

Photos: B&W photo ads incur a one-time charge of \$25.00 payable at first insertion.

READ THE FCA NEWSLETTER ONLINE

FINNISH CENTER ASSOCIATION



35200 W. Eight Mile Road
Farmington Hills, MI 48335-5208

Prsrt STD
U.S. Postage
PAID
Farmington, MI
Permit NO 250

Current Resident or

FCA MEMBERSHIP APPLICATION OR ____ RENEWAL

Date _____ Phone: _____ email: _____

Applicant _____

Applicant/Spouse _____

Address _____

City _____ State ____ Zip code _____

Signature _____ Are you of Finnish descent? _____

- Annual membership, single, one vote \$50.00
- Annual membership, senior* or youth*, one vote \$25.00
- *Senior, over 65 years, youth under 30 years of age
- Annual membership, couple, two votes \$100.00
- Annual membership, family, one vote \$75.00
- Life membership, one vote \$500.00
- Life membership, senior, one vote (see membership for details)

Amount enclosed _____
Please make check payable to FCA and send to Finnish Center Association,
Membership, 35200 W. Eight Mile Road, Farmington Hills, MI 48335-5108
Recommended by: _____

Visit us on “Finnish Center and Hall” Facebook page and “like” us to get the latest updates!



FCA Senior Living

One and two bedroom rentals
Convenient, safe and affordable in highly desirable Farmington Hills, MI

Contact us at:
Tapiola Village (248) 471-3802
Freedom Square (248) 442-7250
www.fcaseniorhousing.org



THAYER-ROCK FUNERAL HOME

33603 Grand River,
Farmington, MI
(248) 474-4131
Paul N. Potti, Director